



Interfaces IMDS-CAMDS and IMDS-CDX



Agenda

- IMDS
- CAMDS
- CDX System
- Advanced Solution IMDS-AI
- CAMDS import with MDS-AI from IMDS
- CDX import with AI from IMDS
- IMDS-AI & IMDS-a2 Advanced solutions Service and Training



IMDS

<https://www.mdssystem.com/imdsnt/faces/login>

Material data system of the Automotive industry

- Full material declaration regarding 2000/53/EC
- More than 20 years
- More than 20 million MDSs
- MDS Updates possible
 - (product change and data change)
- MDS Where used analyses possible
 - Regarding substances and special substance lists
- REACH §33 information



CAMDS

<https://cuc.camds.org.cn/camds/login.action>

Material data system of the Chinese Automotive industry



用户登录 User Login

User ID: User ID forgotten
 Password: New Password
 Language:
 Validate Code: Refresh
 Login In Register

Offline Declaration | CIE Declaration | Data Conversion | Training Application

Copyright(c): China AutoMotive Technology & Research Center
(Please use IE6.0 and higher version of the browser)

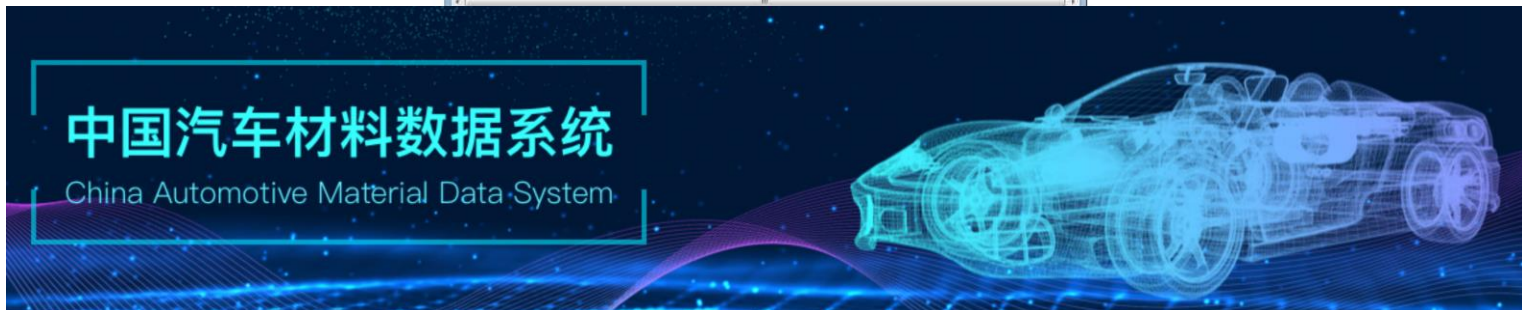
Register supplier

Please make sure that your supplier has not been registered in CAMDS yet.
Please input the relevant data of supplier here. All the fields marking (*) must be filled in.

Supplier's Information

DUNS No.: DUNS format is 99-999-9999
 Chinese Name of Enterprise: *
 Foreign Name of Enterprise: *
 Institution code: *
 Country: * Province/City:
 Address: * Postal code:
 Main Business: Enterprise Identity/Supplier:
 Please enter the enterprise administrator information of your supplier here. Please note that the enterprise administrator should be an employee of your supplier and not yours. This user is responsible for registering other users of his/her enterprise. Make sure that the enterprise administrators e-mail is correct, because his/her registration data will be sent to it.
 Supplier's Enterprise Administrator
 Name: * Telephone No.: *
 Fax No.: * E-mail: *
 Register Close

Copyright(c): China AutoMotive Technology & Research Center



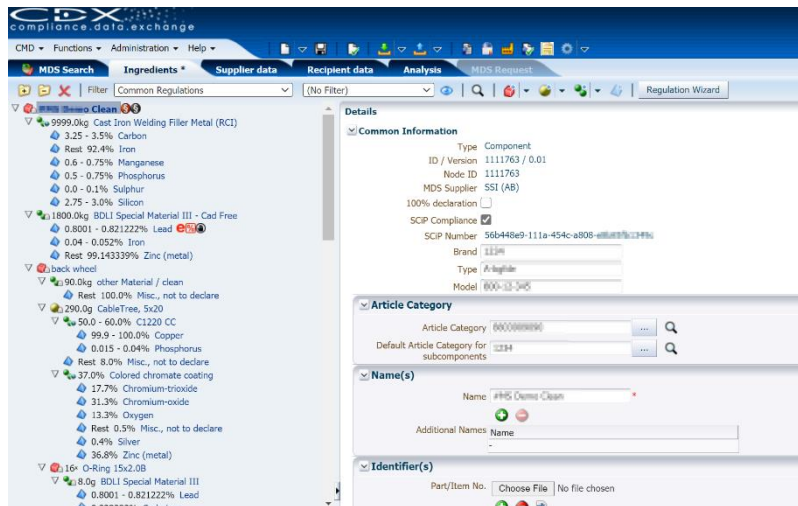


CDX System

<https://www.cdxdsystem.com/cdx/faces/login>

Compliance Data Exchange

- Supply Chain Data Management and Environmental Compliance across multiple industries including
 - Heavy Equipment
 - Electronics
 - Aerospace and Defense



ENTRY LICENSE	SMALL COMPANIES	MEDIUM COMPANIES	LARGE COMPANIES
2,000 EUR/year (2,260 USD) Up to 10 suppliers	13,500 EUR/year (15,250 USD) Up to 100 suppliers	26,500 EUR/year (29,950 USD) Up to 250 suppliers	42,500 EUR/year (48,025 USD) Up to 500 suppliers
Accept and Reject MDS Export a single MDS into SCIP format*	Accept and Reject MDS Produce SCIP Dossiers** Export of lists via MS Excel	Accept and Reject MDS Produce SCIP Dossiers** Export of lists via MS Excel	Accept and Reject MDS Produce SCIP Dossiers** Export of lists via MS Excel
License including starter guidance: 3,800 EUR (4,290 USD)	Export of MDS via IPC1752A, IPC1754 or IEC62474 format Administration of Company Specific Basic Substance Lists and Regulations Reporting Functionality Provision of CDX Web Service Interface (CDX WSI)	Export of MDS via IPC1752A, IPC1754 or IEC62474 format Administration of Company Specific Basic Substance Lists and Regulations Reporting Functionality Provision of CDX Web Service Interface (CDX WSI)	Export of MDS via IPC1752A, IPC1754 or IEC62474 format Administration of Company Specific Basic Substance Lists and Regulations Reporting Functionality Provision of CDX Web Service Interface (CDX WSI)
License including starter guidance: 15,300 EUR (17,280 USD)	License including starter guidance: 28,300 EUR (31,980 USD)	License including starter guidance: 44,300 EUR (50,055 USD)	License including starter guidance: 44,300 EUR (50,055 USD)
SIGN UP	SIGN UP	SIGN UP	SIGN UP



Advanced Solutions

Overview

- IMDS-a2

IMDS-a2 Features		
Examiner	Analysis & Reporting Module	REACH Module
Inbox Automation	Where-Used Analysis	REACH Regulation Information
Compare MDS	Company-specific Substance Lists	Reporting
User Administration	Dashboard	Conflict Minerals Analyzer

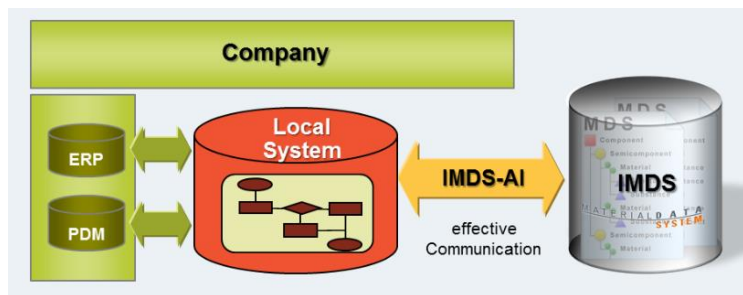
IMDS-a2 (basic version)

An annual license costs 2,900 Euro per IMDS-a2 activated IMDS user ID.

If you would like to order more than one license the following price list applies:

1 - 5 annual licenses:	2,900 Euro each
6 - 10 annual licenses:	2,750 Euro each
11 - 20 annual licenses:	2,600 Euro each

- IMDS-AI



IMDS-AI fee structure

Contract Period: 12 months	IMDS-AI Tariffs					
	a	b	c	d	e	f
Modules (up to)	200,000	99,999	9,999	4,999	1,999	999
Remote Consulting Support (hours)	30	20	12	8	5	—
License Fee (EUR)	36,750	21,000	15,750	8,400	5,250	3,150

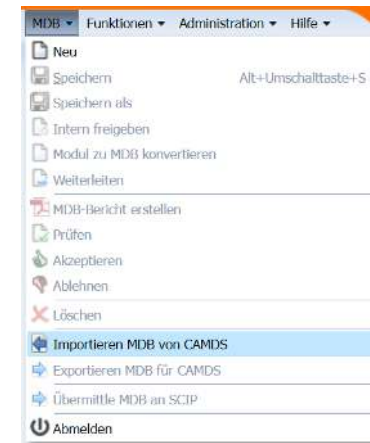
The number of datasheets imported into CDX is not deducted from the available number of modules in the respective tariff.



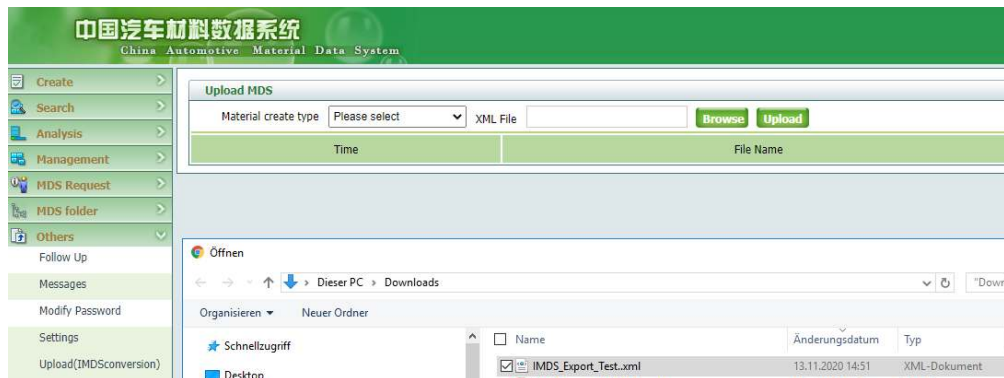
CAMDS import with IMDS-AI from IMDS

Import and Export of CAMDS is possible

- Import from CAMDS into IMDS



- Import from IMDS into CAMDS



IC conversion fee includes annual use fee and annual traffic package fee.

Details are as follows:

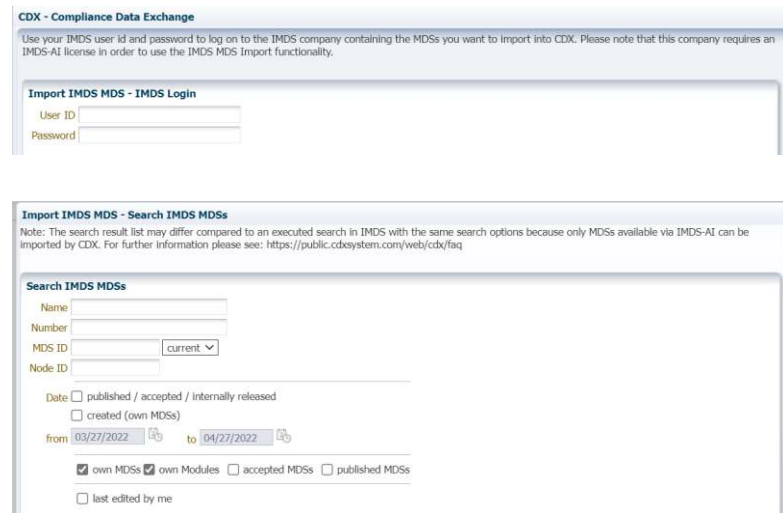
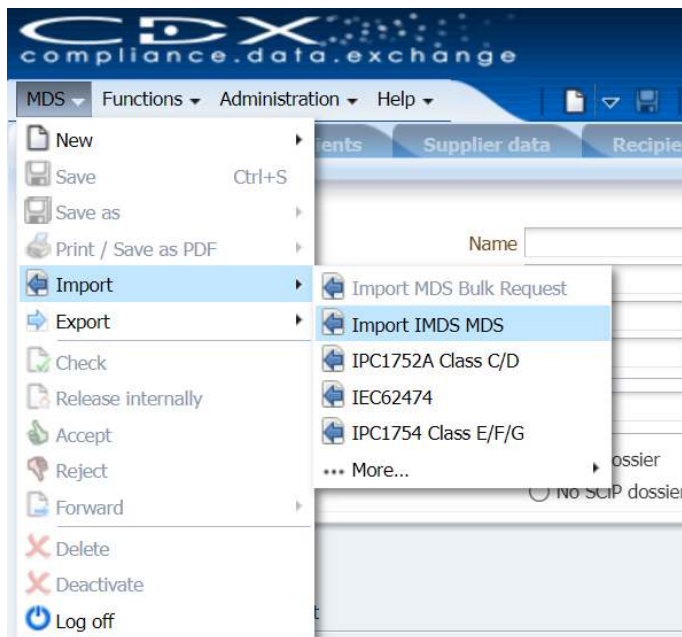
Annual use fee				
<input type="checkbox"/> First use (¥)	100,000RMB	<input type="checkbox"/> Non-first use (¥)	20,000RMB/year	
Annual traffic package fee				
Package	<input type="checkbox"/> A	<input type="checkbox"/> B	<input type="checkbox"/> C	<input type="checkbox"/> D
Range of billing nodes	0-2000	2001-5000	5001-10000	unlimited
Fee (¥)	50,000RMB	100,000RMB	150,000RMB	180,000RMB
Remarks : 1. Upload nodes counting rule: sum of root nodes and material nodes in the MDS generated in upload; 2. If the form exceeds the expected number of billing nodes, the charge shall be CNY25/node; 3. When the annual package expires, the number of remaining billing nodes will be reset; 4. The above quotation includes 6% VAT. 5. CAMDS to IMDS conversion fee is subject to IMDS's requirement.				



CDX import with IMDS-AI from IMDS

Import of IMDS MDS

- IMDS User ID and Password
- Search for the articles which we want to import






IMDS-AI & IMDS-a2

Advanced solutions Service and Training

We are your **Contact Persons**

IMDS PROFESSIONAL **CONTACT**

We are happy to pass on helpful practical tips and forward-looking insider knowledge to you in Material Compliance training courses. This reduces your costs and risks for product liability enormously and you can often still save costs.



FREE INITIAL CONSULTATION

You need support but not sure which of our services is right for you? Book an appointment for a free, 15-minute initial consultation. Together we can clarify your needs, estimate the effort involved and then send you a customised offer.

[REQUEST INITIAL CONSULTATION →](#)

QUOTE REQUEST

Do you need support with your material compliance tasks and already know what you need? We will be happy to help you and provide you with an individual offer for service or consulting! Describe your requirements to us and we will get back to you promptly.

[REQUEST A QUOTE →](#)



Good luck with the application of what you have learned ...



... wishes you the imds professional team